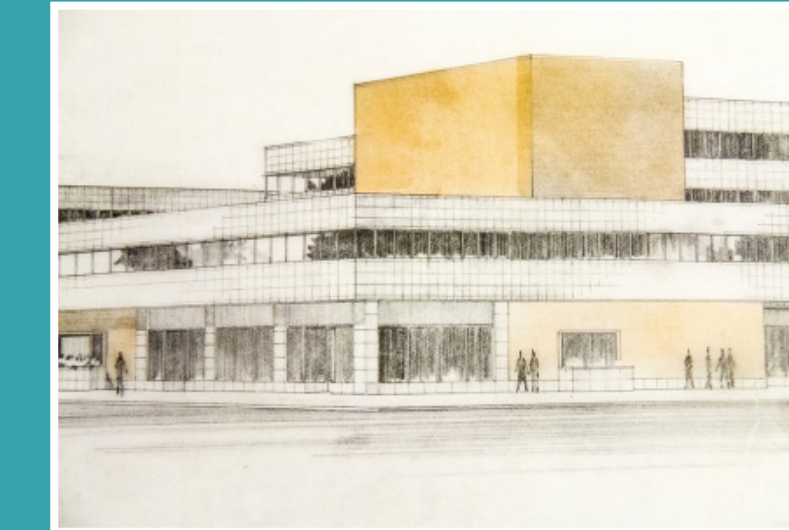




View of a Cherry Creek flood in 1864.  
 (Denver Public Library/Western History Collection/X-29336)



Tree planting, the city dump, and houses along Cherry Creek, 1920. By the 1920s, Harman was considered a suburb of Denver and was largely an African American neighborhood.  
 (Denver Public Library/Western History Collection/X-29364)



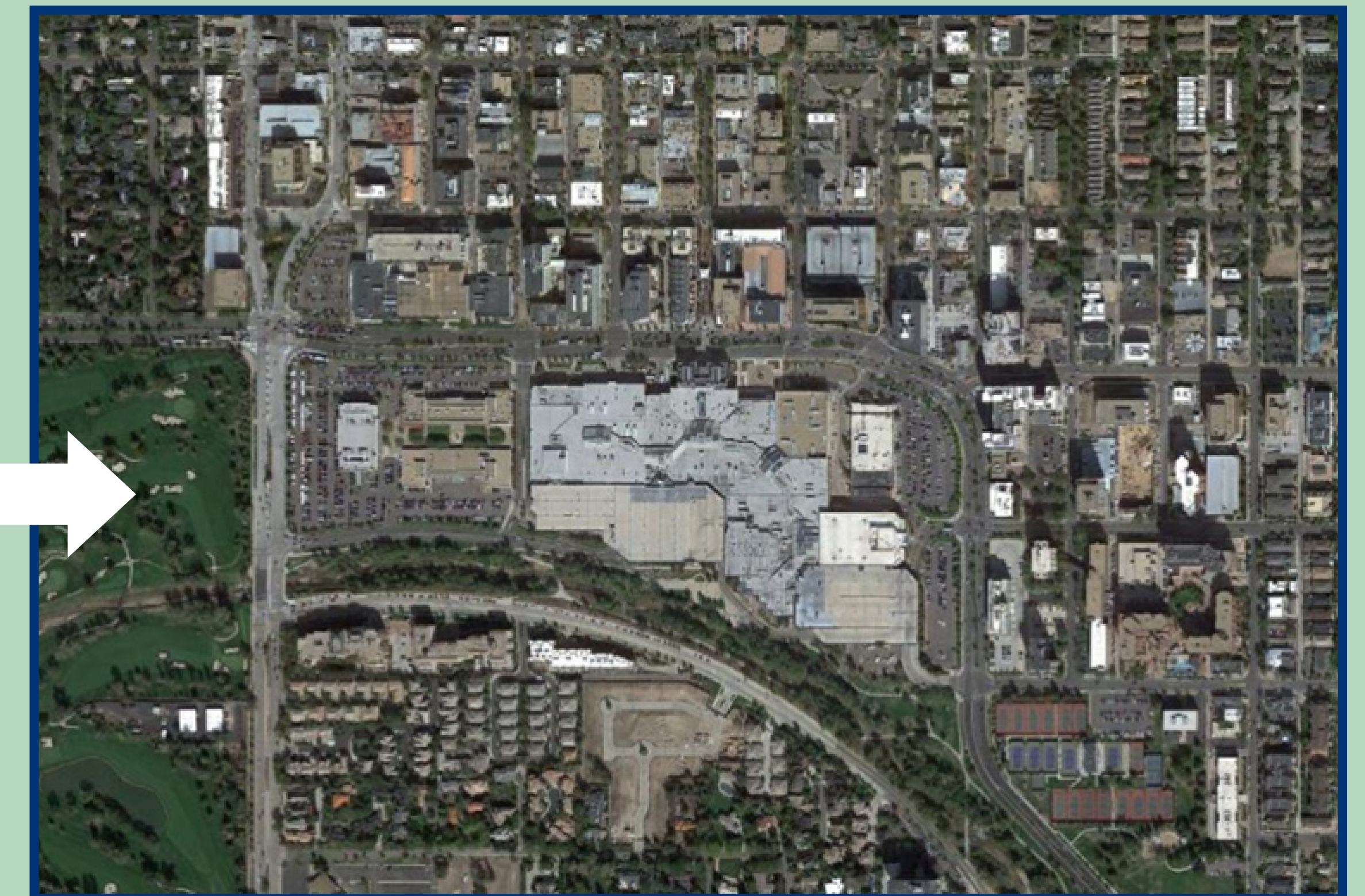
Temple Hoyne Buell was born in 1895. He moved to Denver in 1921 and established the largest architectural firm in the Rocky Mountain region. He designed the concept of a central mall with parking lots encircling the shops, and built the original Cherry Creek Shopping Center in accordance with his vision.



This aerial photo shows the Cherry Creek West site in 1950 after the dam was built.



This aerial shows the site in 1957 after construction of the central mall designed by Temple Buell.



In the 1980s, The Taubman Company constructed the enclosed portion of the center and parking garage to the east side of the original Temple Buell development. Above is an aerial showing the entire site in 2015.

# Cherry Creek West History

