

# Team

east west partners

## LEAD PLACEMAKERS

For over 30 years we've been dedicated to creating terrific places that add value to the communities where we live and work, like Riverfront Park and Denver Union Station. All while contributing our time and energy to making our city stronger through our ongoing involvement with civic organizations like the Downtown Denver Partnership, Urban Land Institute, and task forces for both the mayor and city council. We believe our community-first mindset uniquely positions us to lead the re-imagination of this people-first development, and we couldn't be more excited to bring to life.

## MEET THE TEAMS HELPING US BRING THIS FANTASTIC COMMUNITY TO LIFE:

### DESIGNWORKSHOP

An international design studio integrating landscape architecture, urban design, economics and engagement.

### Gensler

An integrated architecture, design, planning, and consulting firm providing global reach with local touch.

### BuildMark

A boutique Denver-based project management firm committed to creating vibrant places that enrich Colorado communities.

## SPECIAL THANKS TO OUR PARTNERS:



Investing in Colorado's future by supporting the childhood development through grants and partnerships within our community.

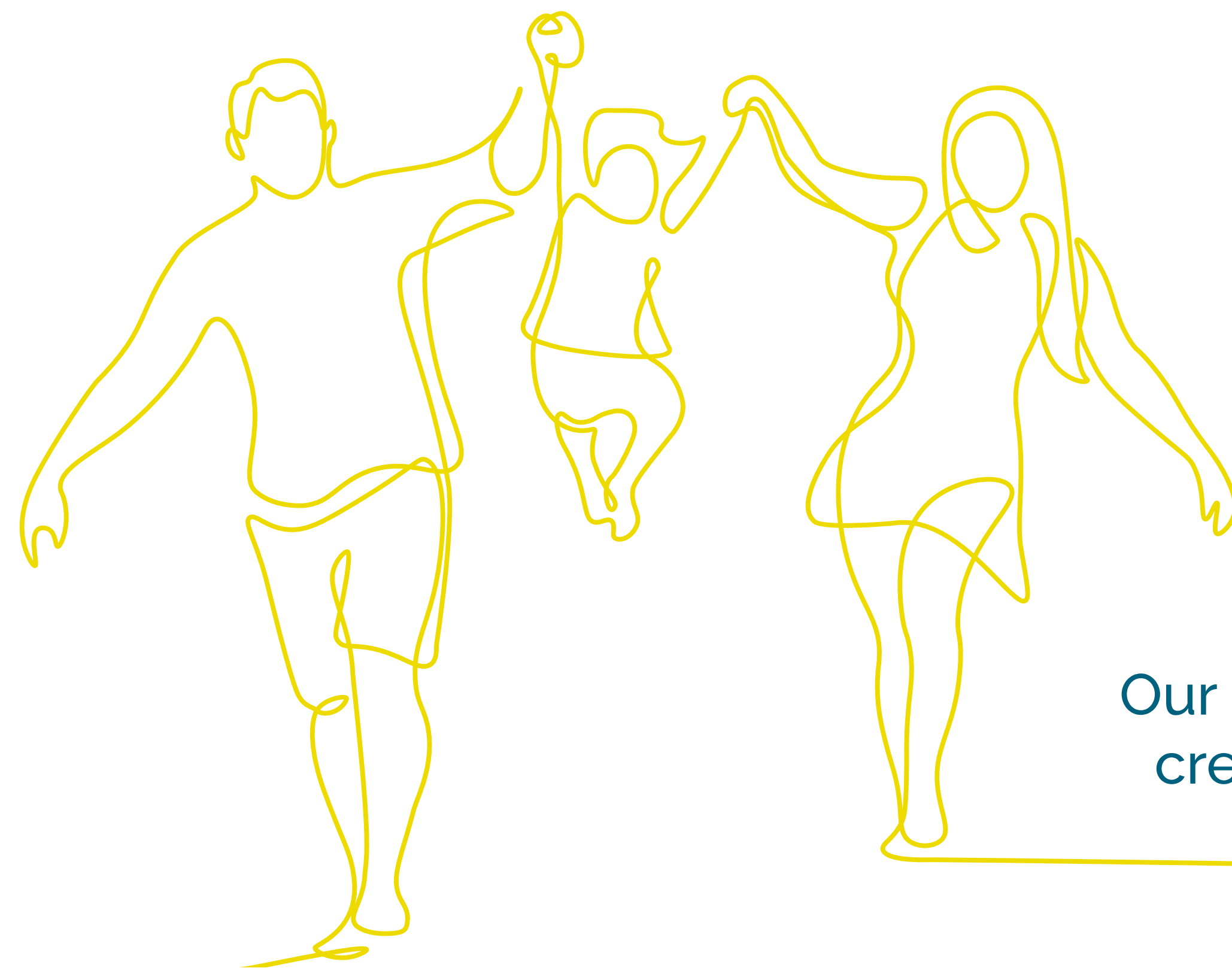
### Taubman

Creating extraordinary retail environments including regional and super-regional malls, located in major markets from coast to coast.



CHERRY CREEK WEST



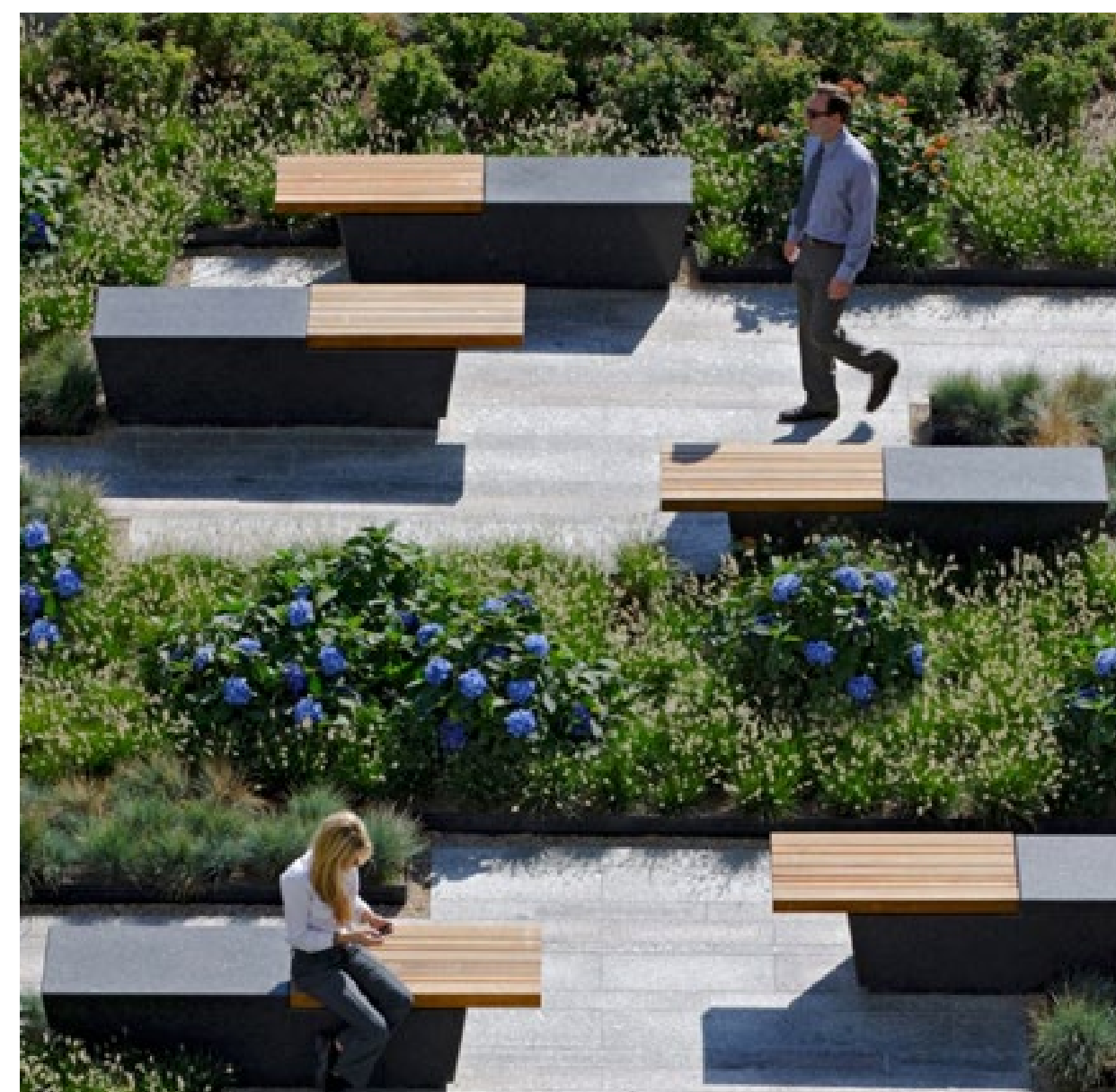


## MISSION

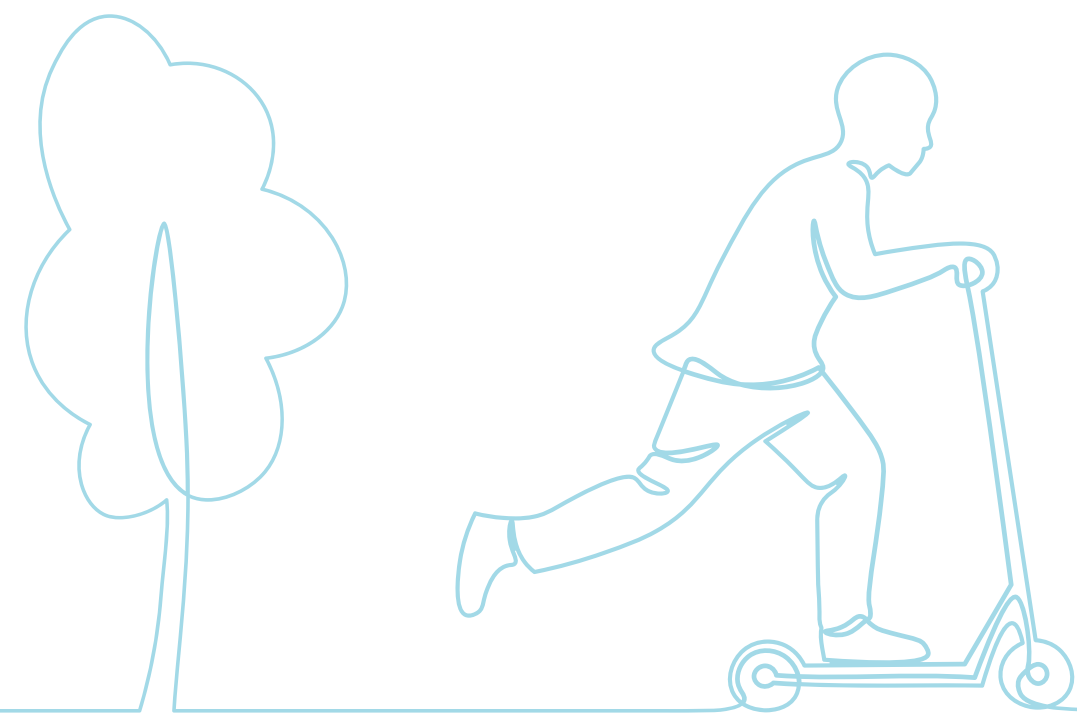
Our mission is to create a vibrant, people-centric neighborhood that embraces the creek, connects to the existing community, and is a terrific place to live and work.

## VALUES

- Designed for people first
- Celebrates the outdoors
- Putting the CREEK back in Cherry Creek
- Centered around wellness
- The neighborhood's new front yard
- Unapologetically sustainable
- Be a role model
- Where work isn't work







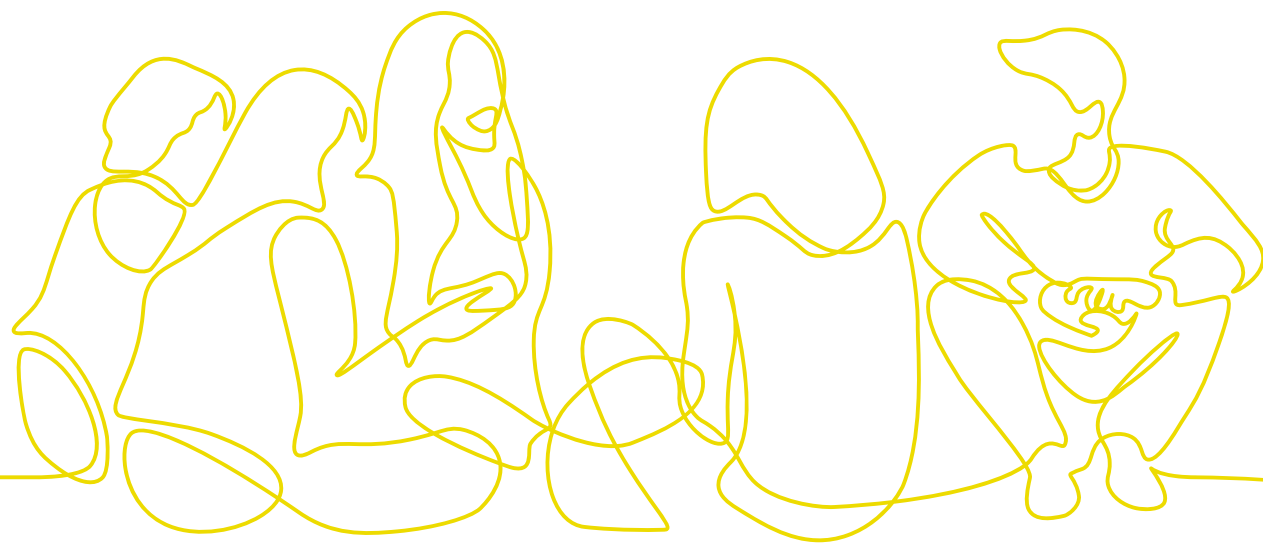
## DESIGNED FOR PEOPLE FIRST

This is a place intended to make people's lives better, healthier, more convenient, and sustainable. By creating a 15-minute neighborhood, everything people need to thrive is a short walk or bike ride away, removing the need for cars and focusing on the pedestrian experience.



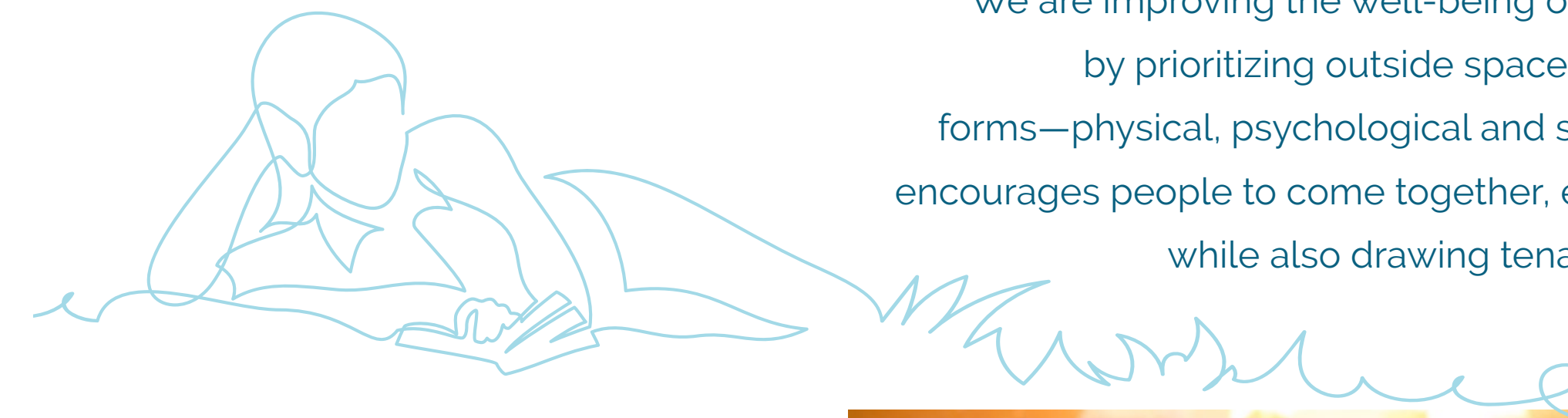
## PUTTING THE CREEK BACK IN CHERRY CREEK

Everything leads to the creek. With a thoughtful connection to the rest of the community through great new public spaces, we are drawing people to it and celebrating it as a natural element for all to enjoy fully. Now the spirit of the creek stretches beyond its banks, creating an urban eddy in the heart of the neighborhood.



## CELEBRATES THE OUTDOORS

By incorporating found pathways that weave between buildings and situating them to maximize the expansive views and the sunlight in between we are creating functional outdoor spaces meant to draw people outside to recharge and reconnect.



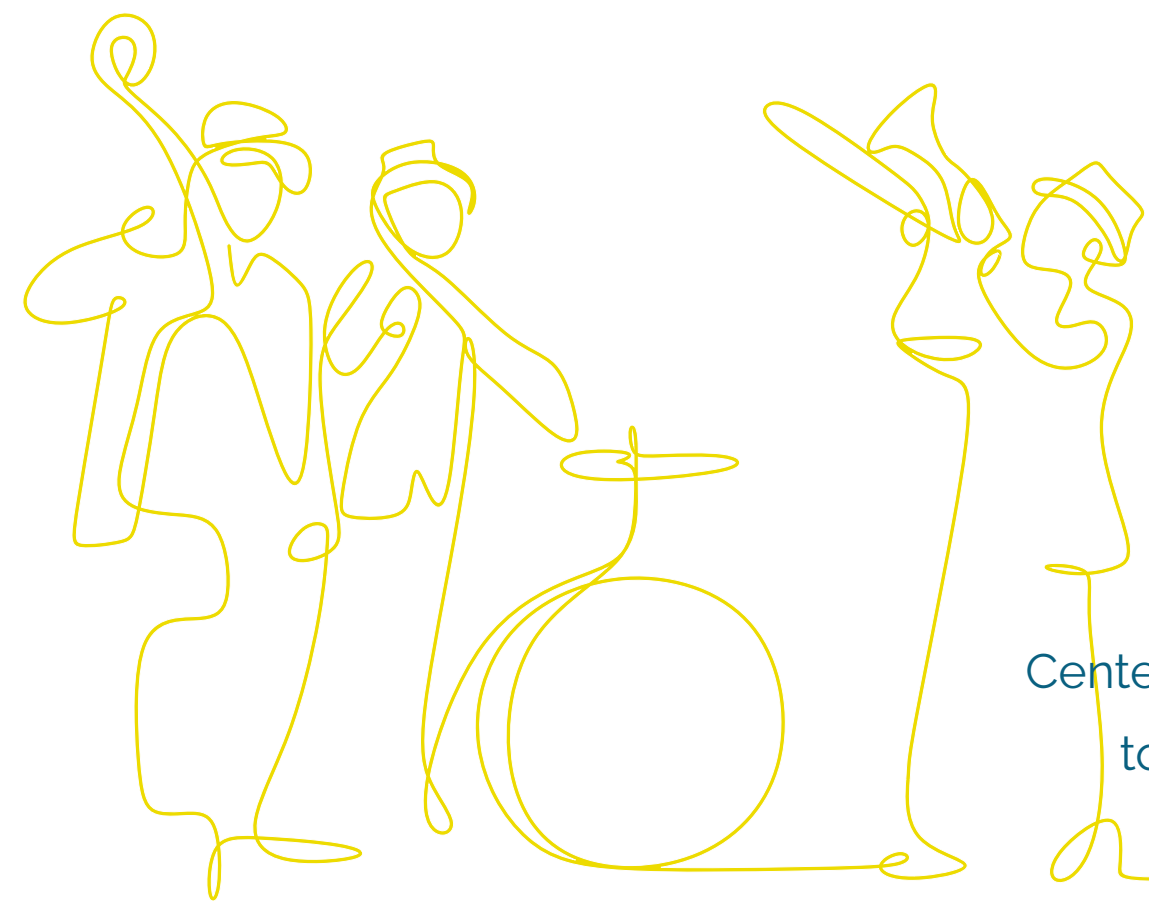
## CENTERED AROUND WELLNESS

We are improving the well-being of people, the community, and the planet holistically by prioritizing outside spaces that create a sanctuary focused on health in all its forms—physical, psychological and social—in the middle of the community. A place that encourages people to come together, exercise, linger, and enjoy new cultural experiences, while also drawing tenants who prioritize the wellbeing of their employees.



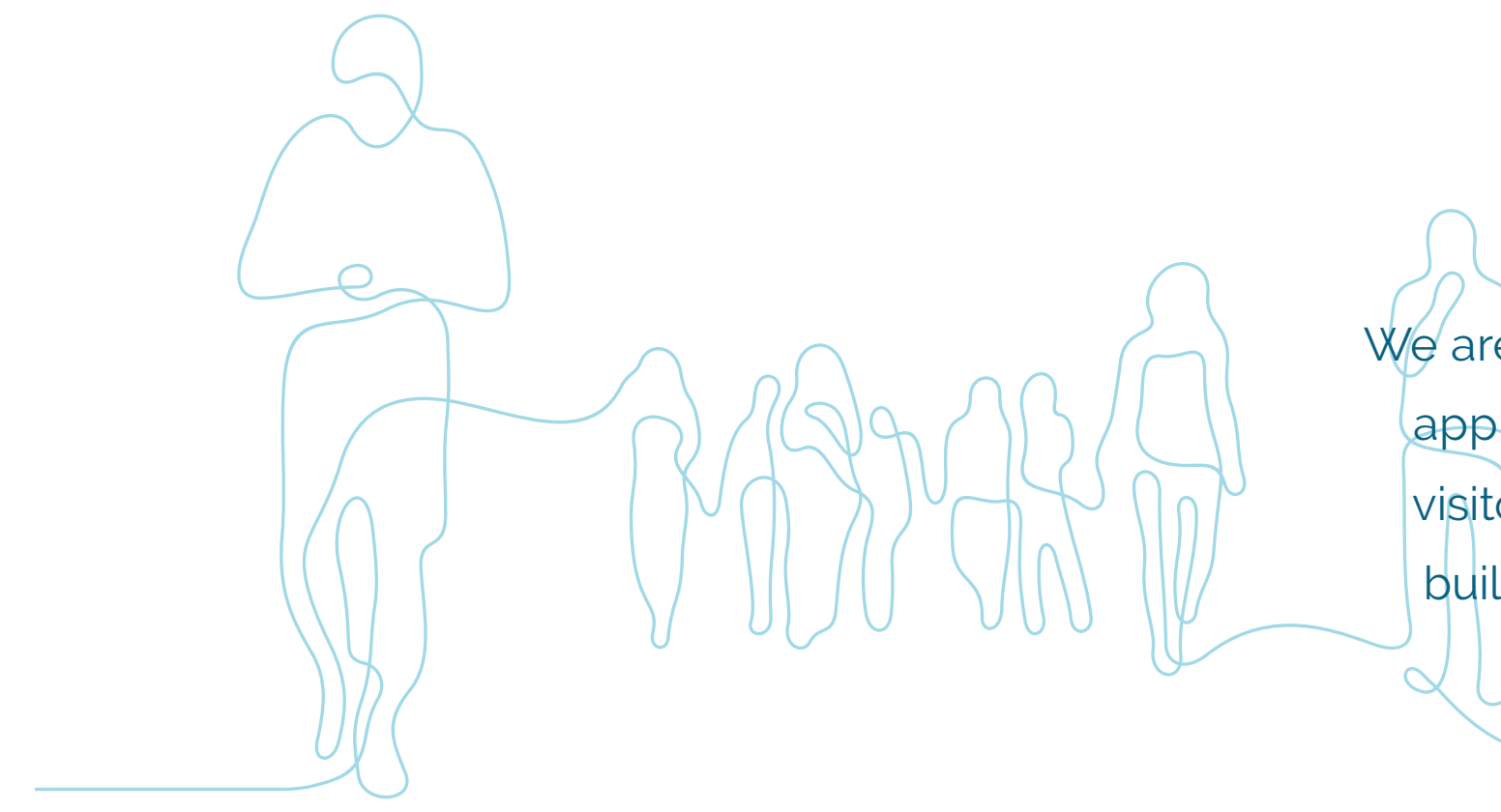
# What value do you identify with the most?





## THE NEIGHBORHOOD'S NEW FRONT YARD

From end to end, this is a place that draws people in and invites them to linger. Centered around a sprawling open green space, it will feel like a front yard that belongs to everyone in the community, and a focal point for spending time outside together.



## BE A ROLE MODEL

We are redefining how a neighborhood is designed, taking a forward-thinking approach to planning that appeals to residents, businesses, employees and visitors—now and far into the future. By starting with the public realm, then the buildings, and finally by removing cars, we have invested the extra effort to do what is right for people, for the planet, and for the community.



## UNAPOLOGETICALLY SUSTAINABLE

From the very beginning, we've consciously made efforts to be sustainable in the details of the design, large and small. With a focus on carbon reduction through alternative materials, efficiency and offsetting to propel our mission forward, we are creating a neighborhood that raises the bar for the future.



## WHERE WORK ISN'T WORK

Back to work, but better. We're approaching work in a more grounded way. This is a place where the line between indoors and outdoors blurs into what we call "mid-doors." Buildings oriented to maximize views, Colorado skies and natural light. Thoughtful, efficient and flexible floor plates. Curated amenities with a focus on wellness, including fresh air inside. Building systems that emphasize both health and energy efficiency. All in a place that inspires your best work.



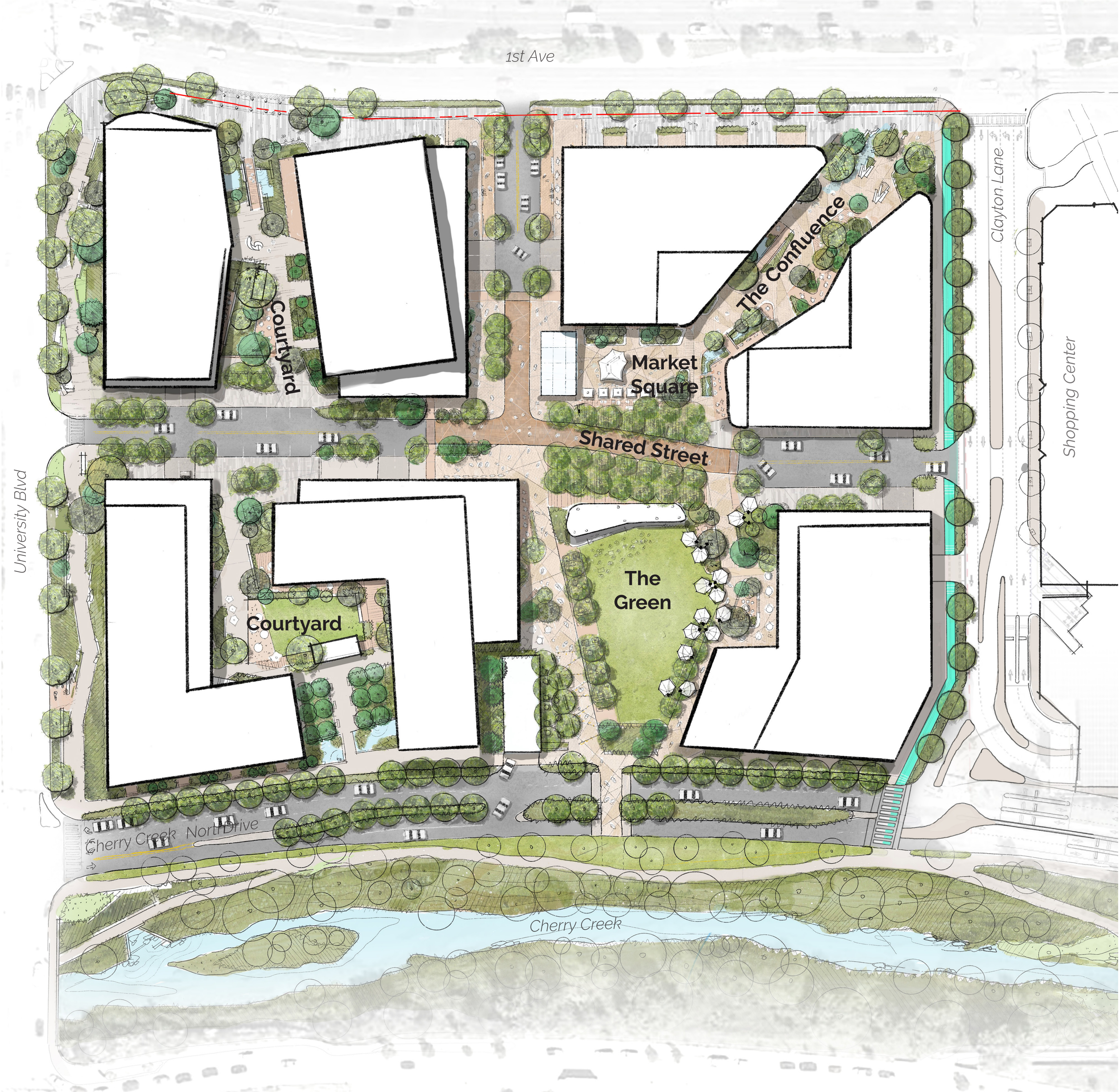
# What value do you identify with the most?



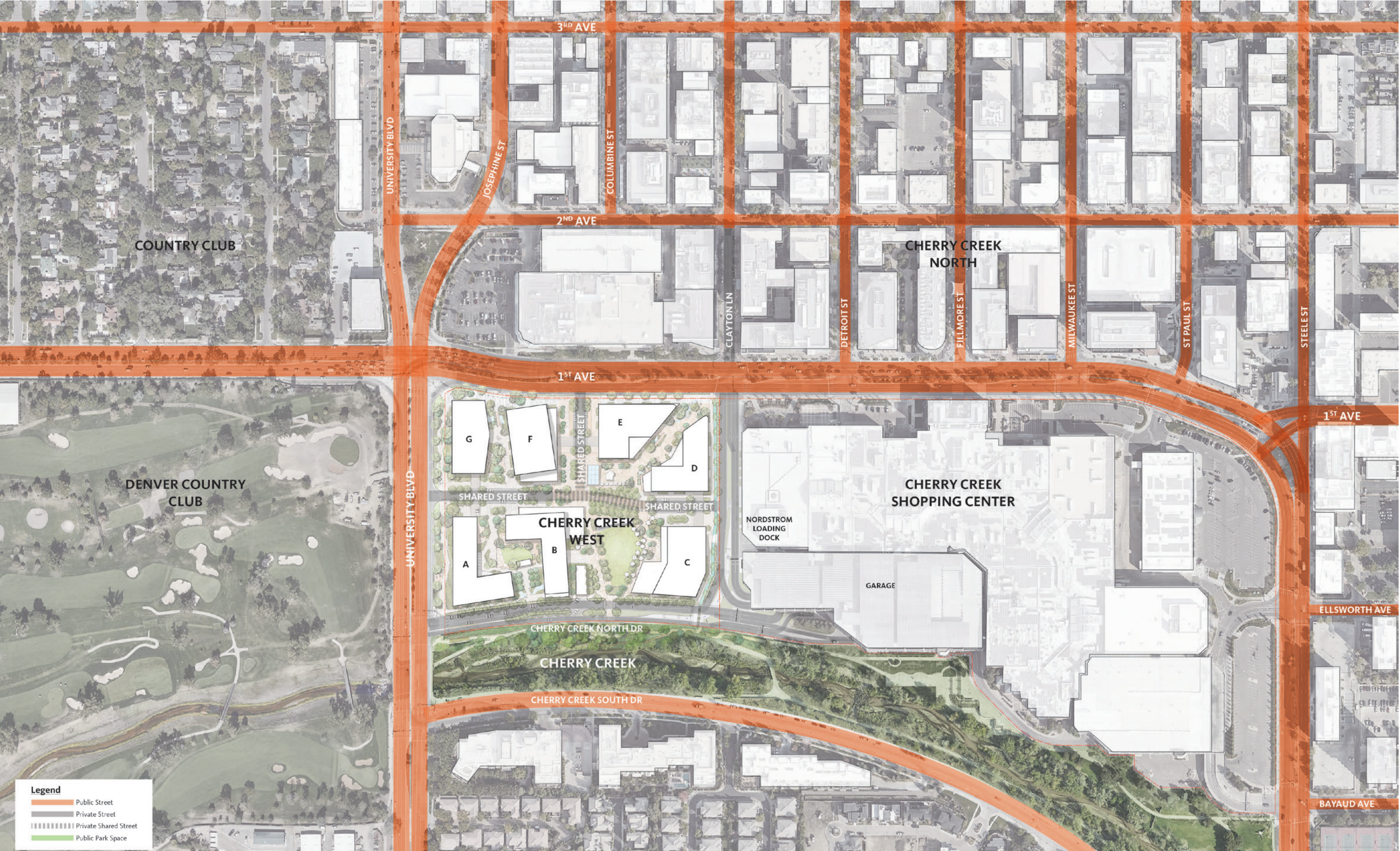
CHERRY CREEK WEST



# MASTER PLAN



# CONTEXT MAP



# CONNECT TO THE SURROUNDING AREA



# Cherry Creek West Master Plan + Context

